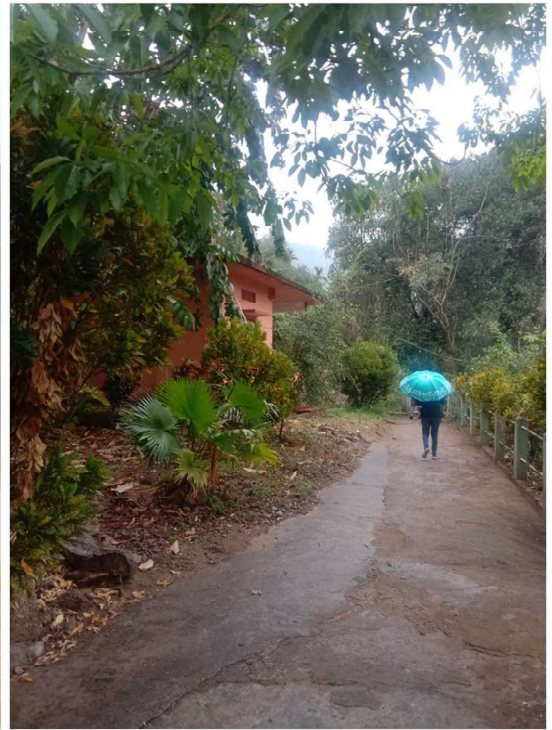
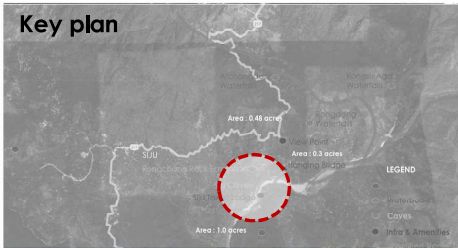


Node 1: Site Near Siju Tourist Lodge Site Photographs

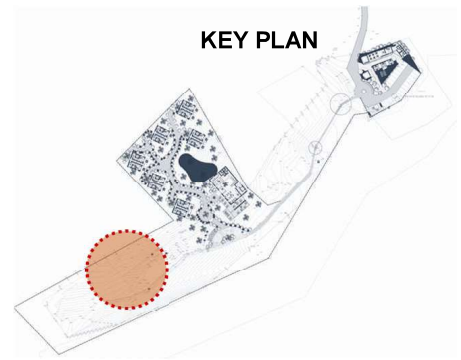
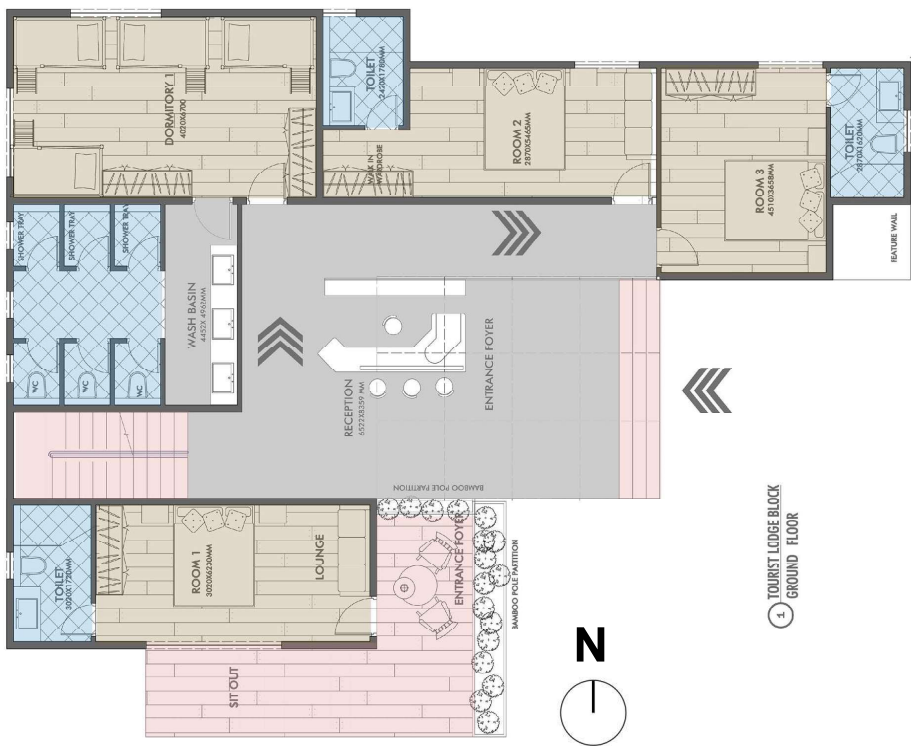
CLUSTER 1: SIJU



A.SIJU TOURIST
LODGE – EXISTING
BUILDING

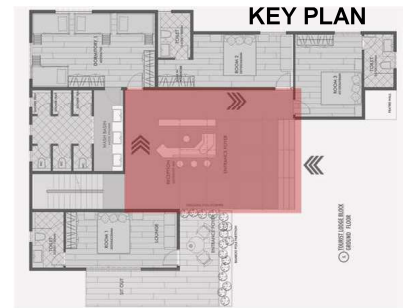


Node 01: Siju Tourist Lodge Site- Existing Tourist Lodge Renovation



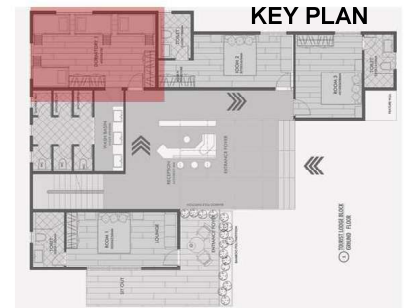
**3 ROOMS IN GROUND FLOOR
1 DORMITORY
GROUND FLOOR AREA : 201sqm**

Node 01: Siju Tourist Lodge Site- Existing Tourist Lodge Renovation



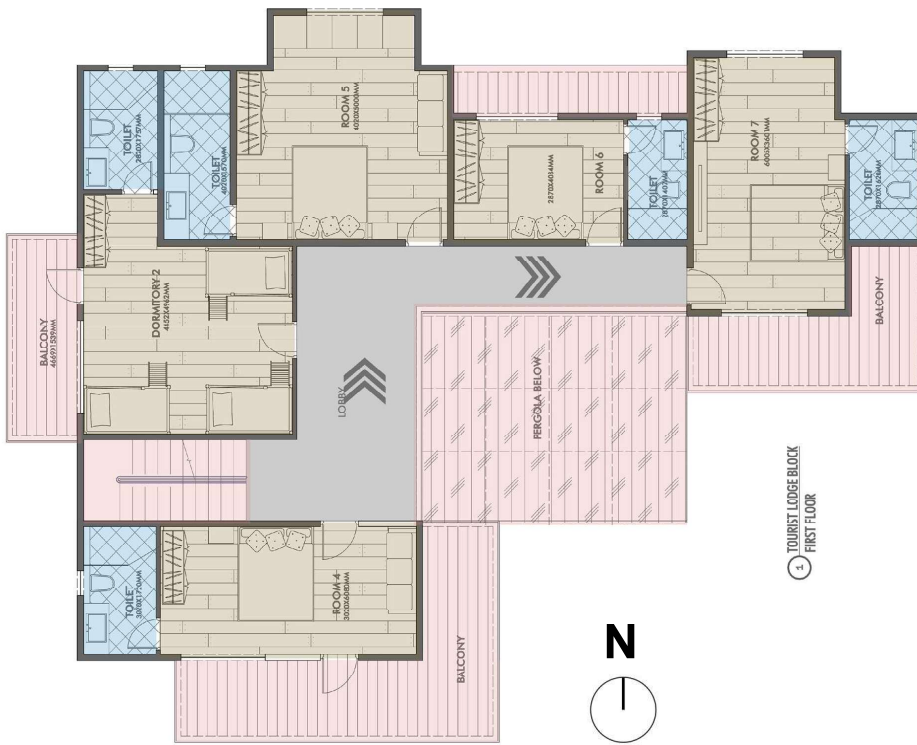
- The Entrance Pavillion to the Tourist Lodge with Cortan Steel structure and central courtyard space that gives welcoming entry to the tourist lodge
- Central grand entry divides the space into two division making it separate access to private rooms overlooking the riverside
- Dormitory accommodation on other side make it ideal destination for backpackers.

Node 01: Siju Tourist Lodge Site- Existing Tourist Lodge Renovation

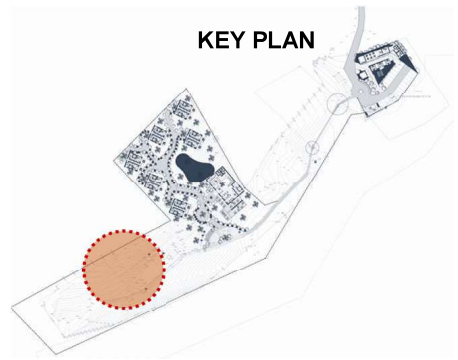


- Dormitory services in the block are planned in such way that it accommodates backpackers, youth and group of friends coming together
- The room is well furnished with wooden bunk bed and wooden flooring
- **4 BUNK BEDS – 8 PERSON** on ground floor
- **3 BUNK BEDS -6 PERSON** on first and second floor respectively.
- **Total : 12 person** in the dormitory accommodation.

Node 01: Siju Tourist Lodge Site- Existing Tourist Lodge Renovation

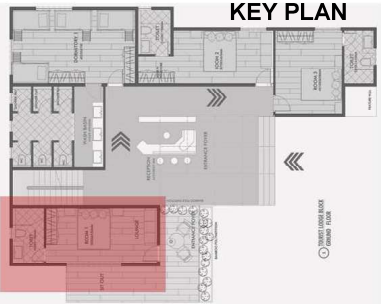


TOURIST LODGE BLOCK
FIRST FLOOR



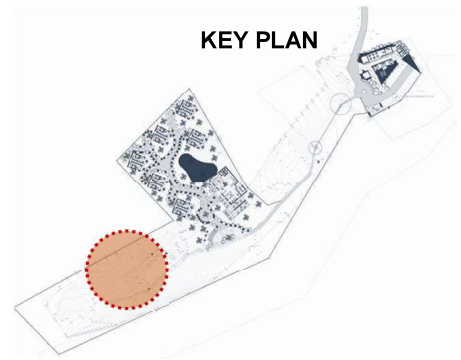
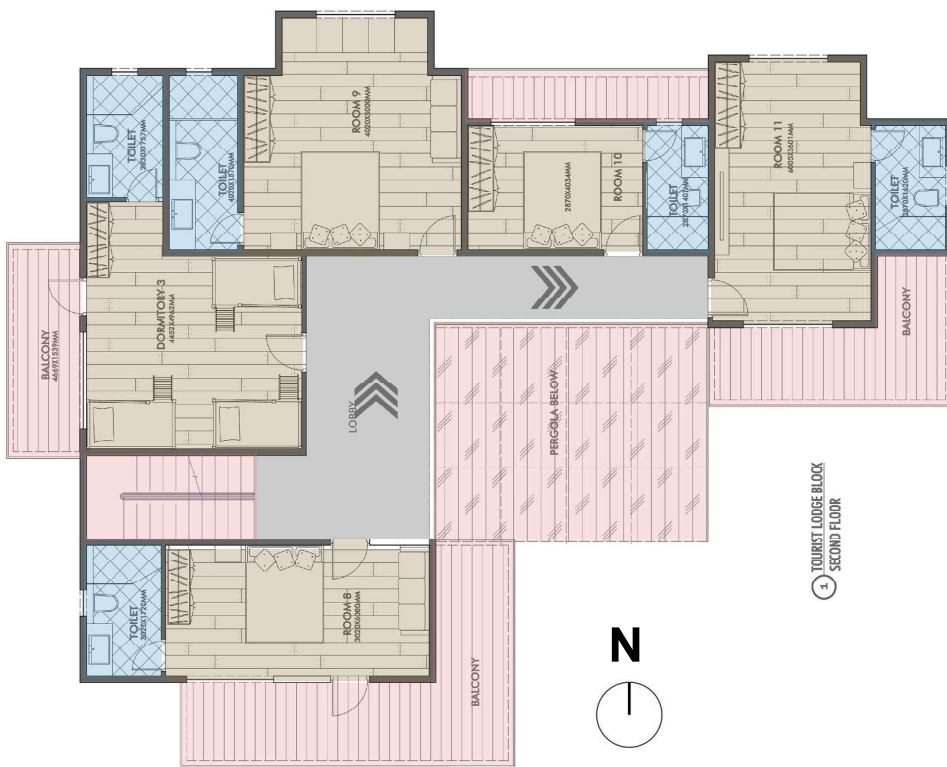
**4 ROOMS IN FIRST FLOOR WITH BALCONIES
1 DORMITORY
FIRST FLOOR AREA : 190sqm**

Node 01: Siju Tourist Lodge Site- Existing Tourist Lodge Renovation



- Private rooms with wooden flooring ,well furnished and balconies overlooking the Sigona River .
- Couple friendly rooms with bathroom.

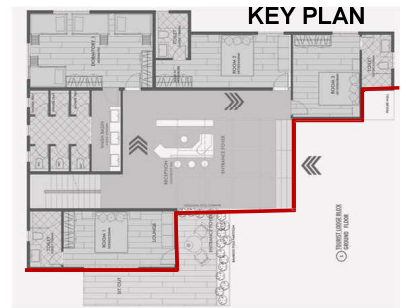
Node 01: Siju Tourist Lodge Site- Existing Tourist Lodge Renovation



4 ROOMS IN SECOND FLOOR WITH BALCONIES
1 DORMITORY
FIRST FLOOR AREA : 190sqm

SIJU TOURIST LODGE BLOCK
11 ROOMS
3 DORMITORIES

Node 01: Siju Tourist Lodge Site- Existing Tourist Lodge Renovation



- Façade treatment to be done with louvers/fins of bamboo cladding or wooden cladding material
- Pergola overhangs to expand the span latitudinal look .

B.SIJU TOURIST
LODGE – COTTAGE
SITE

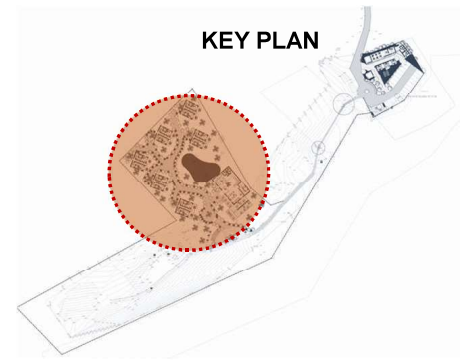


Node 01: Siju Tourist Lodge Masterplan

- Materplan of the Siju Tourist Lodge site .



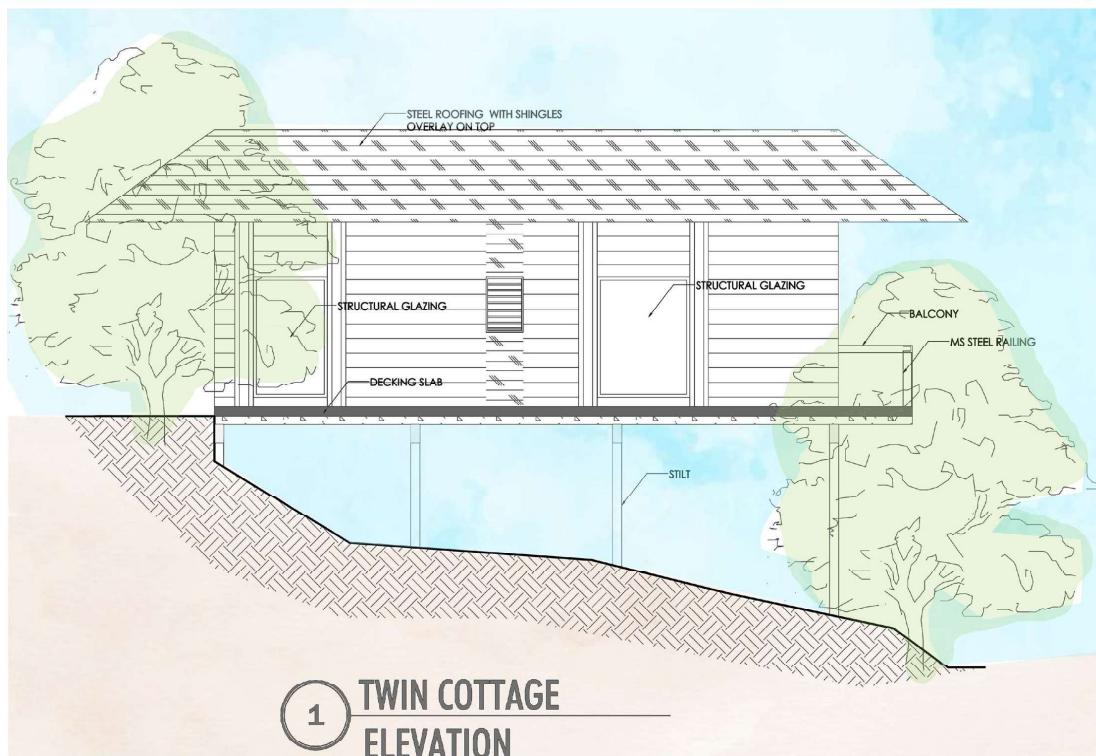
Node 01: Siju Tourist Lodge Site-Proposed Hotel Block – Twin Cottages



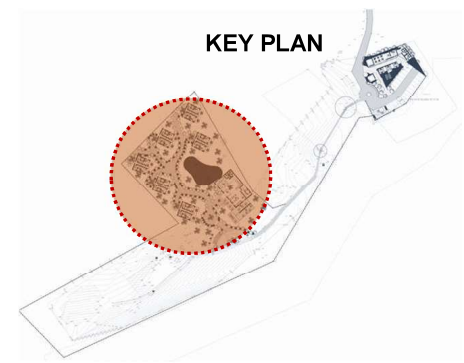
12 keys
Twin cottage with outdoor sitting area
UNIT AREA : 38sqm
BLOCK AREA : 87sqm



Node 01: Siju Tourist Lodge Site-Proposed Hotel Block – Twin Cottages

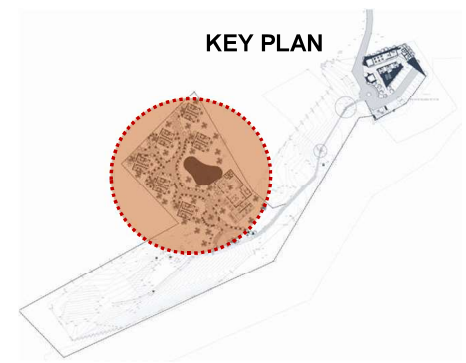
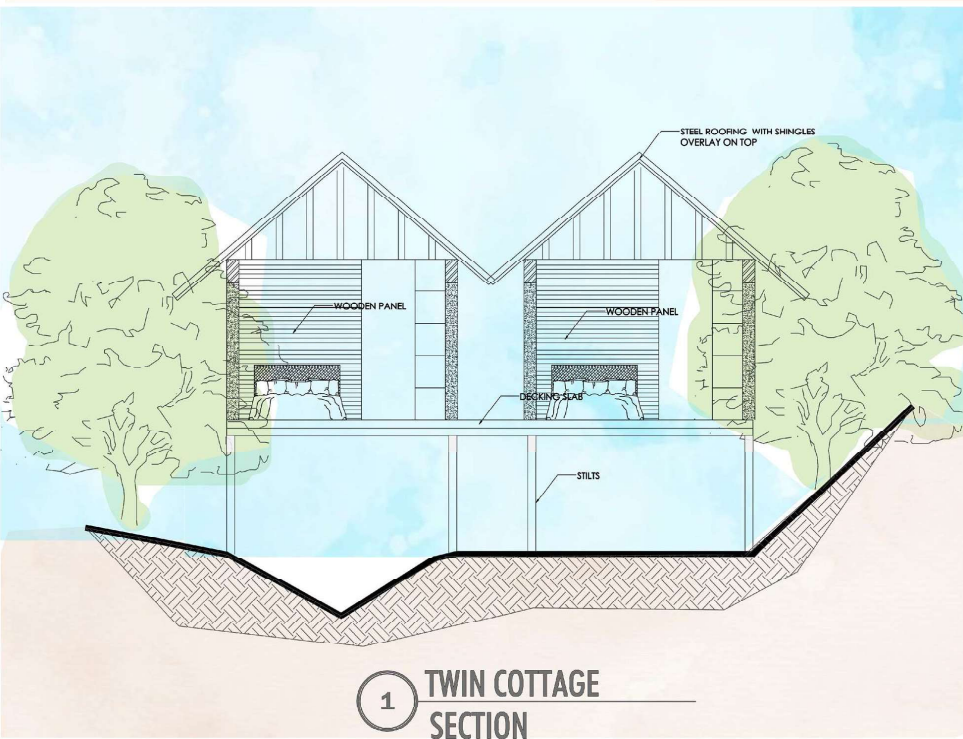


1 TWIN COTTAGE ELEVATION



- The Cottages are planned in twin pattern accessed by central staircase that leading down to experience the contour of the place that overlooks the Sigona River .
- Amidst the lush green , they are mounted on stilts to get more elevated view .
- The cottages are used with local sustainable material of bamboo cladding ,bamboo fins and louvers
- Interiors with wooden and steel windows to get comfort yet, panoramic view

Node 01: Siju Tourist Lodge Site-Proposed Hotel Block – Twin Cottages



- The twin cottages have elevated symmetric look with stair access
- It is designed with shingle roofing with sky lighting
- Individual Outdoor landscape courtyard to enjoy the lush green environment
- Pitch Shingle roof gives more dominant yet, sustainable look to the character of the place .

Node 01: Siju Tourist Lodge Site-Proposed Hotel Block – Twin Cottages



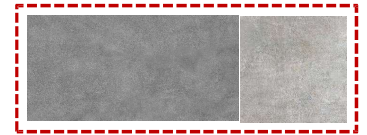
Red Alder



WOODEN DECKING
Interior Use Only
Rs 220 /Sqft



Bohemia Oak
WOODEN FLOORING
Interior Use Only
Rs 220/Sqft



VITRIFIED (ANTI SKID) CONCRETE FINISH FLOORING AND WALL TILES
Interior Use Only
Rs 40/Sqft



Twin Cottages – Siju Tourist Lodge



Twin Cottages and Clubhouse – Siju Tourist Lodge



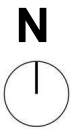
Twin Cottages and Clubhouse – Siju Tourist Lodge



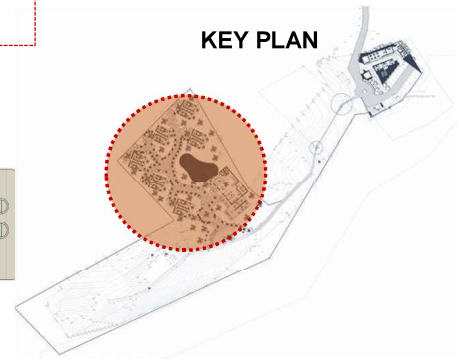
Node 01: Siju Tourist Lodge Site-Proposed Hotel Block – Clubhouse

AREA – 524 SQM

1 CLUBHOUSE
GROUND FLOOR



KEY PLAN



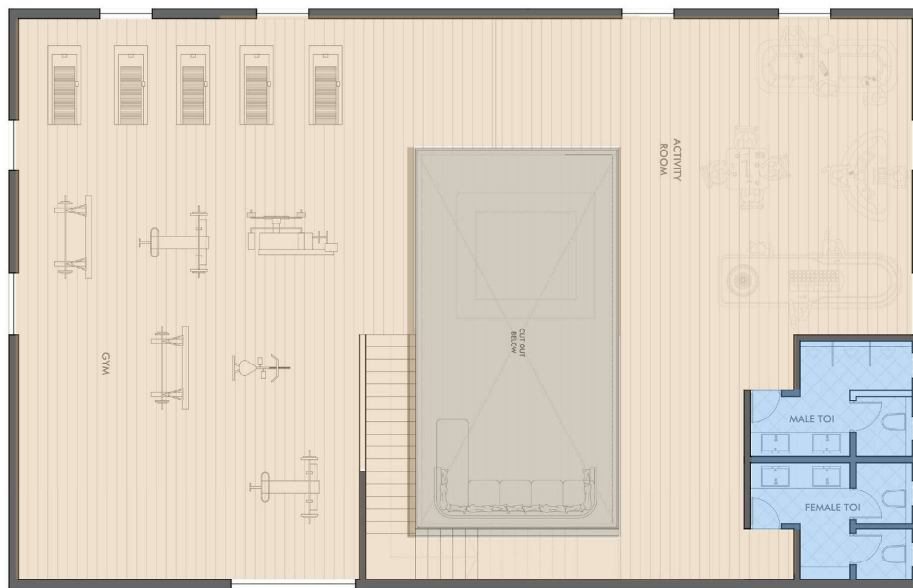
- The Clubhouse is planned more at the lower contour level to keep it as a common access with other blocks.
- Clubhouse is planned with resto-bar, outdoor and indoor dining ,gym and indoor play areas.
- This is also planned in step wise manner indoor to accommodate the contour experience better.

Node 01: Siju Tourist Lodge Site-Proposed Hotel Block – Clubhouse

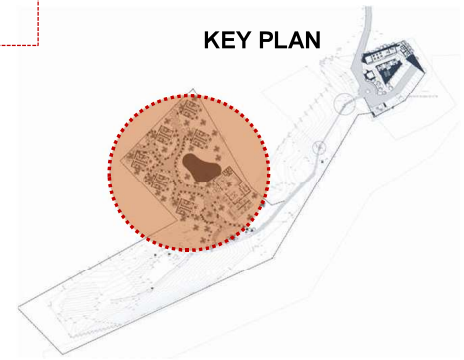
AREA – 308SQM

1 CLUBHOUSE
FIRST FLOOR

N

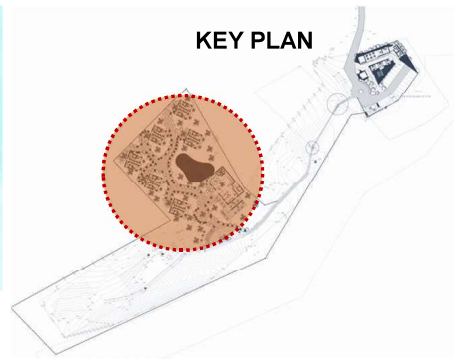
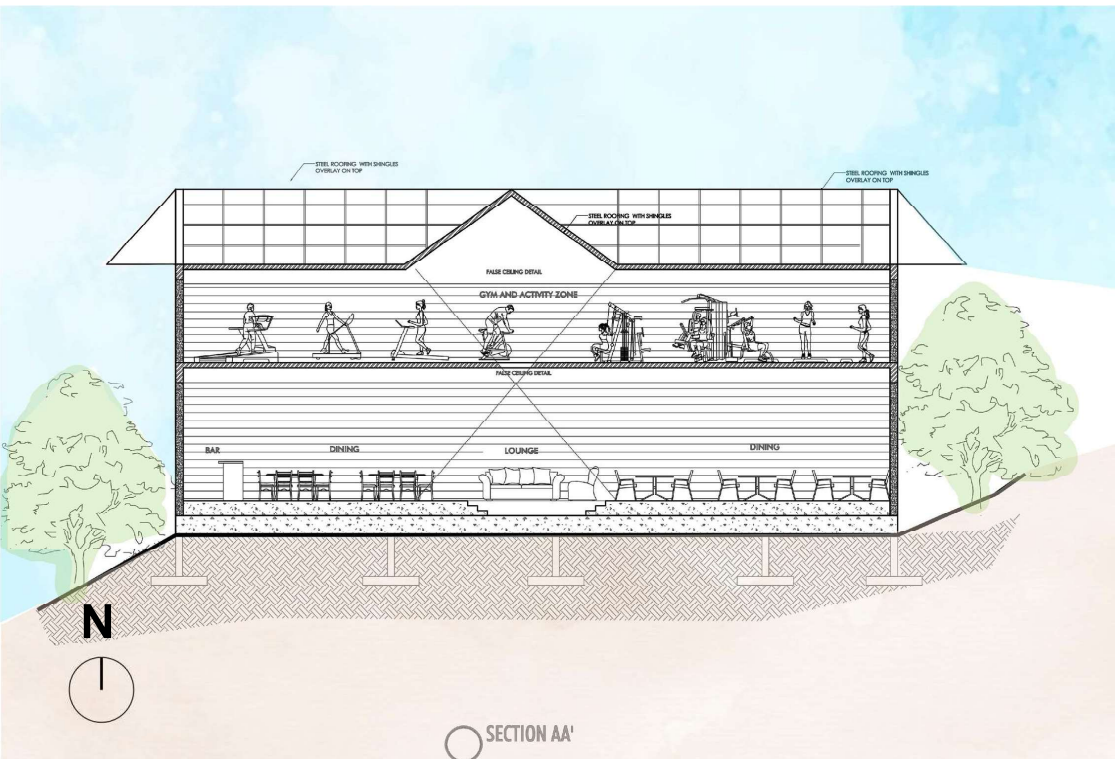


KEY PLAN



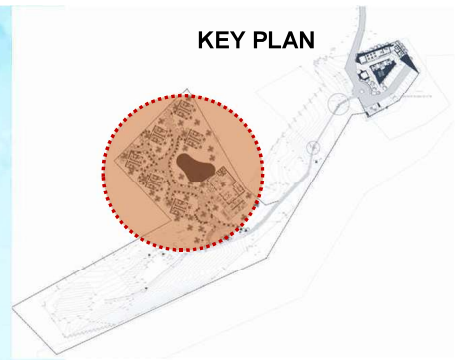
- It is two storey structure with central opening that opens up to huge gable roof.
- This structure is designed with elements of bamboo cladding, steel column like fins with I- section.
- The central staircase and living lounge acts as the main design element of the entertainment.
- The glass in the elevation spans floor to floor giving it best panoramic and complete view of the scenic site.

Node 01: Siju Tourist Lodge Site-Proposed Hotel Block – Clubhouse



- The Roof opens up to a two storey space.
- Shingles with steel roofing with 2 levels up
- Clear spanning windows

Node 01: Siju Tourist Lodge Site-Proposed Hotel Block – Clubhouse



1 CLUBHOUSE ROOF PLAN

- The walls are made with bamboo cladding
- Steel I – section beams with cantilevered on the front acts as canopy and entrance pavilion with outdoor dining.

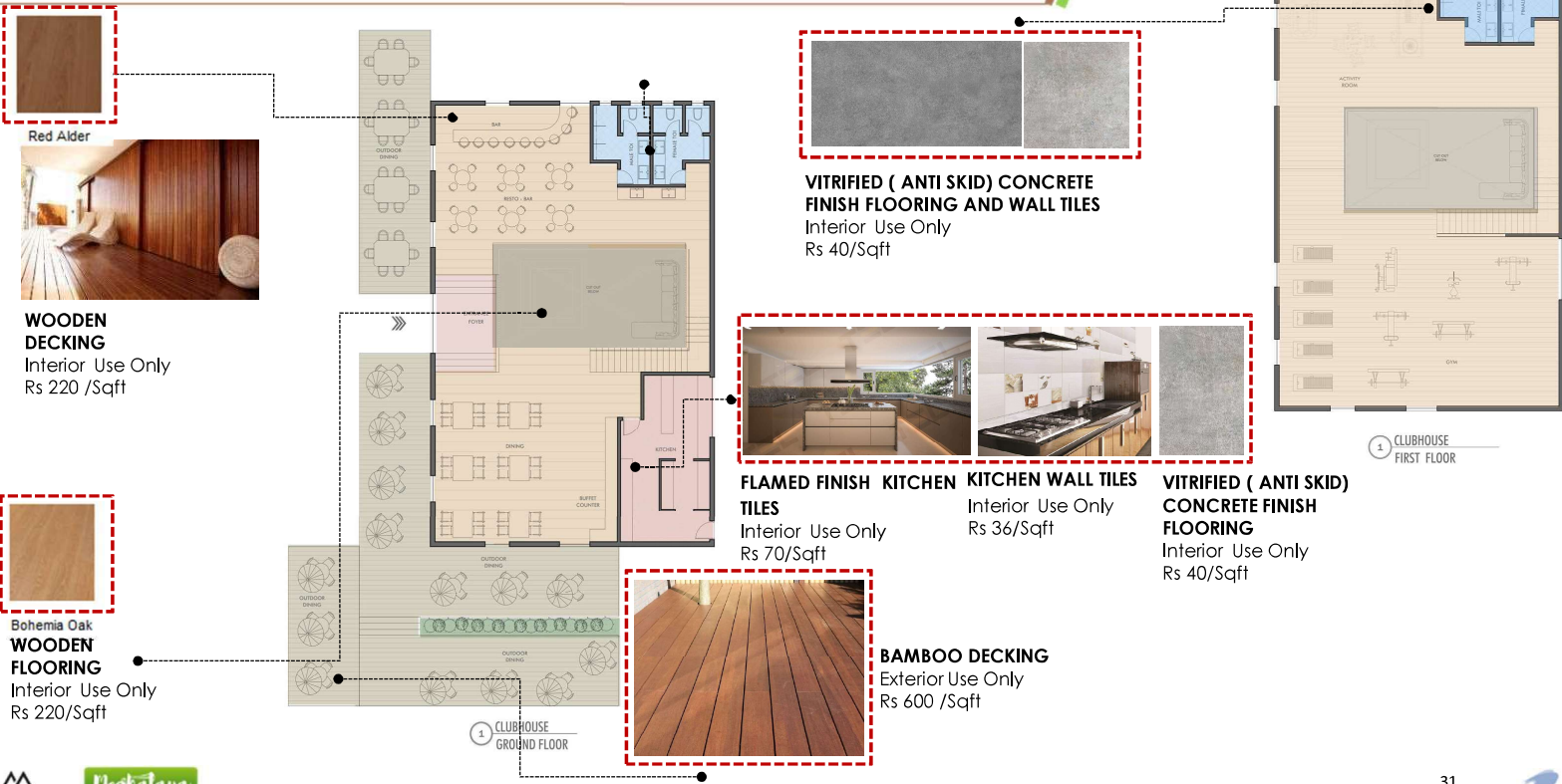
Clubhouse – Siju Tourist Lodge



Clubhouse – Siju Tourist Lodge



CLUBHOUSE – SIJU TOURIST LODGE SITE – Material Palette

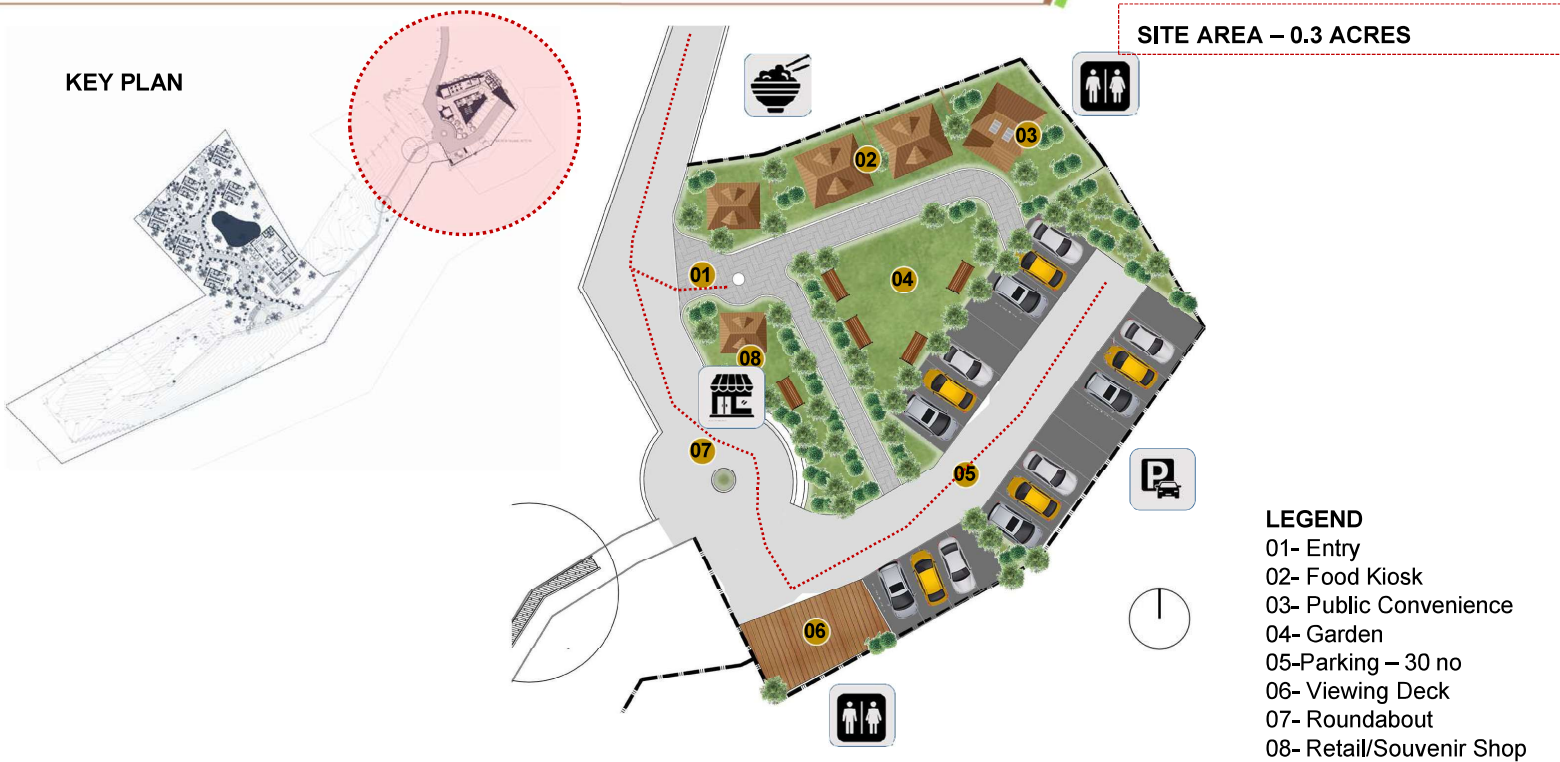


Node 1

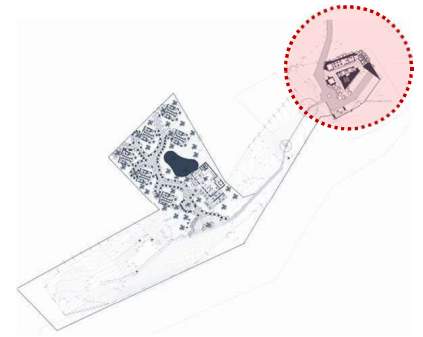
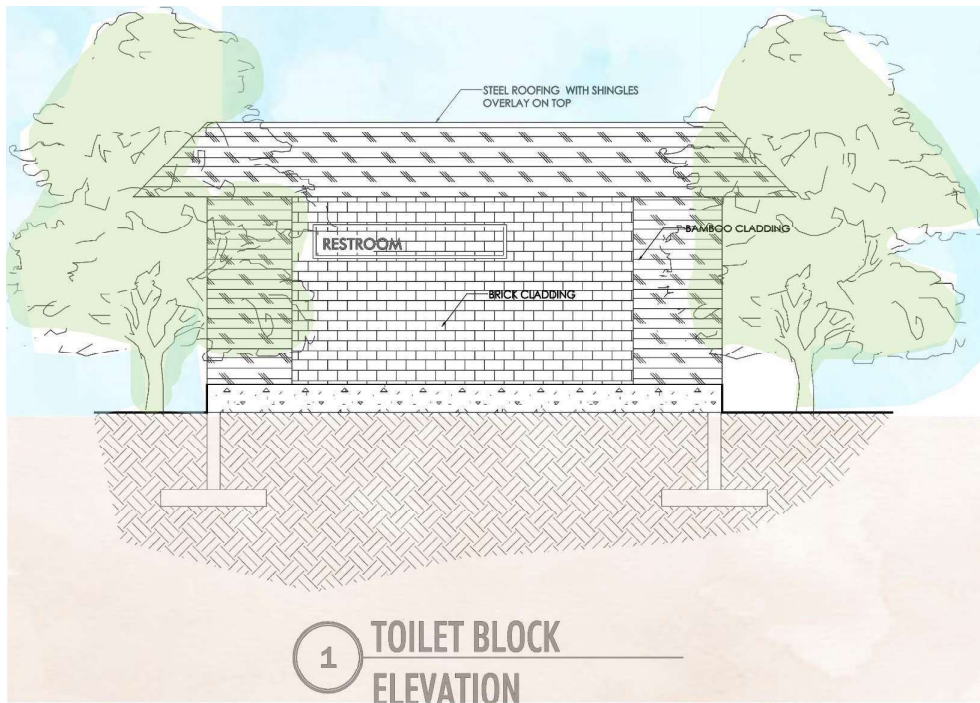
C.SIJU
LODGE – TOURIST
AMENITIES WAYSIDE



Node 01: Siju Tourist Lodge Site- WaySide Amenities

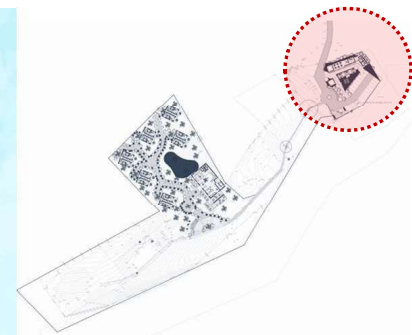
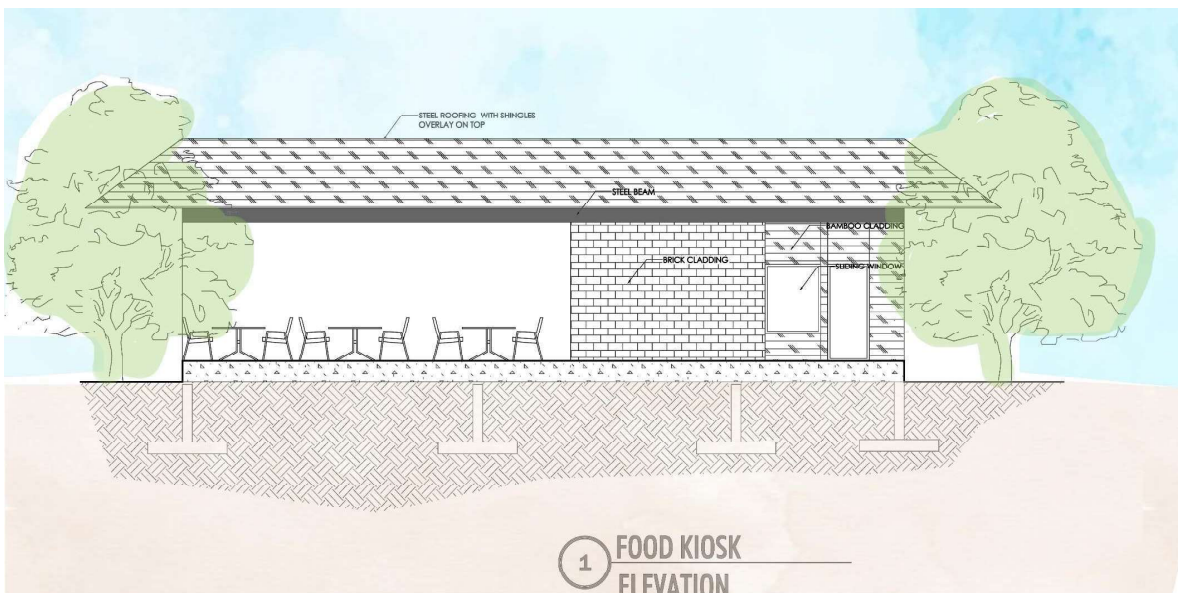


Node 01: Siju Tourist Lodge Site- WaySide Amenities



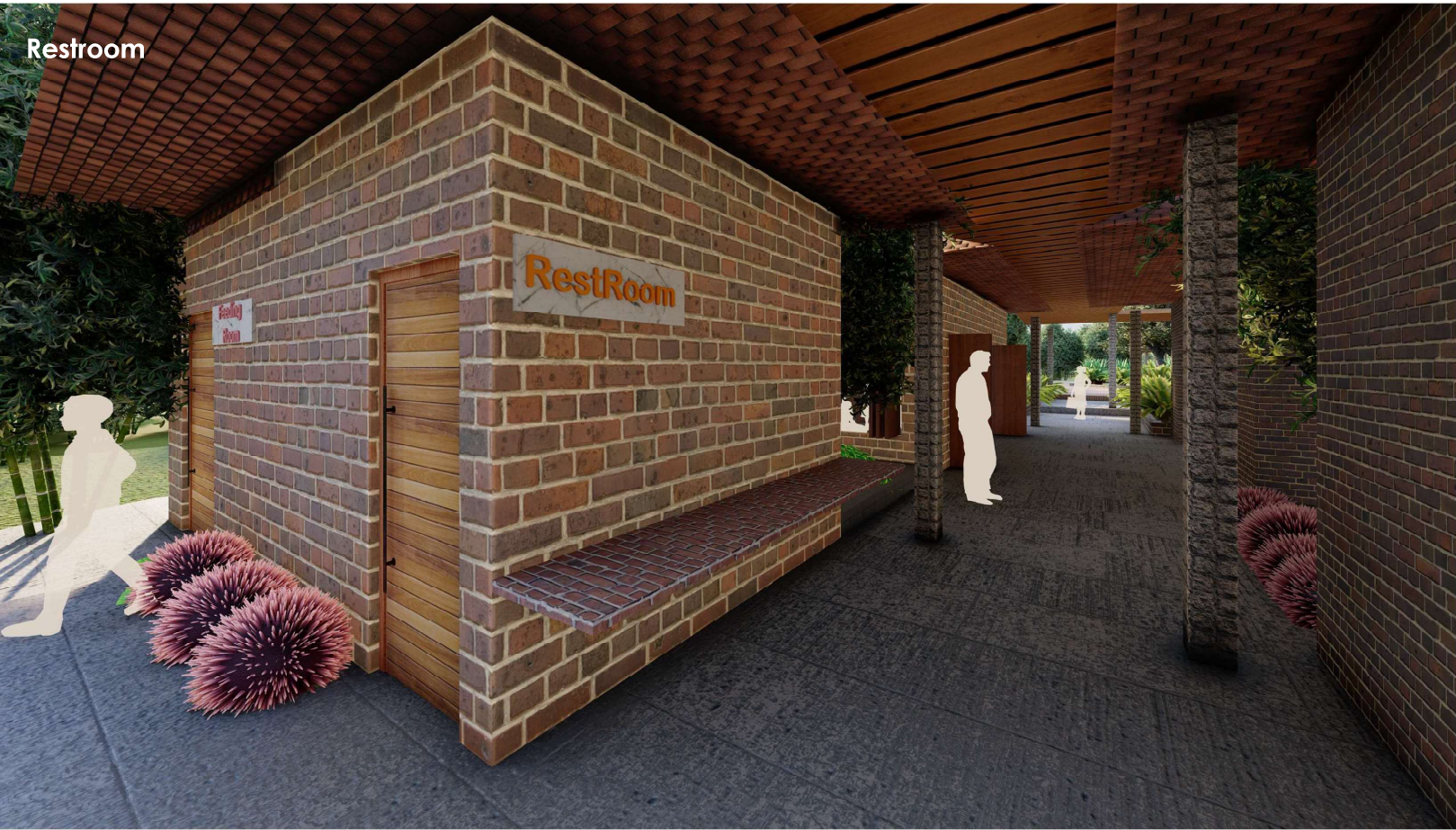
- Public convenience at the entry act as basic required public amenities in the space.

Node 01: Siju Tourist Lodge Site- WaySide Amenities



- The entrance of wayside amenities provides access to parking slots of 30 cars that can accommodate who come for siju caves.
- Food Kiosk, Retail stores and landscaping area acts as small scale wayside amenities
- To enjoy the view of sigona river from proposed viewing deck.

Restroom



Food Kiosk



Node 01: Siju Tourist Lodge Site- Pedestrian Bridge

KEY PLAN



- The site demands for 2 **pedestrian bridge** at the lower contour of the site.
- This acts as the essential connecting bridge as located near to Sigona stream flowing across
- This will be designed in suitable bamboo material bridge

